

COMING SOON!

231 GRANT APARTMENTS



Vibrant, affordable living for
school district teachers, employees,
and their families

231 Grant Ave, Palo Alto, CA 94306

110 Affordable Apartment Homes

Learn more about this
housing opportunity at
231grant.org

Amenities

- Onsite Parking
- Barbecues
- Bicycle Storage
- Children's Play Area
- Community Room
- Courtyards
- Dog Run
- Meeting Rooms
- Onsite Laundry
- Onsite Property Management
- Resident Storage

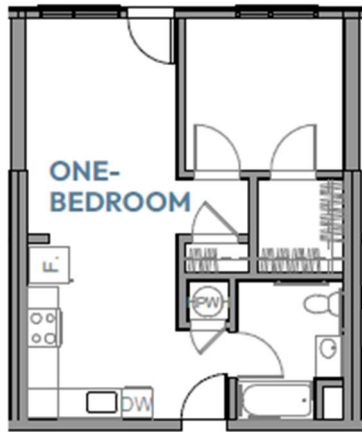


231 GRANT APARTMENTS

Typical Floor Plans, Unit Mix & Affordability



| STUDIOS (376 SF) | | Annual Household Income (By # of Residents) | |
|---------------------|---------|--|------------|
| | | One Person | Two Person |
| Category | RENT | MAX | MAX |
| 1 | \$1,886 | \$103,280 | \$118,000 |
| 2 | \$2,532 | \$180,740 | \$206,500 |



| ONE BEDROOMS (535 SF) | | Annual Household Income (By # of Residents) | | |
|--------------------------|---------|--|------------|--------------|
| | | One Person | Two Person | Three Person |
| Category | RENT | MAX | MAX | MAX |
| 1 | \$2,015 | \$103,280 | \$118,000 | \$132,720 |
| 2 | \$2,707 | \$180,740 | \$206,500 | \$232,260 |



| TWO BEDROOMS (814 SF) | | Annual Household Income (By # of Residents) | | | |
|--------------------------|---------|---|--------------|-------------|-------------|
| | | Two Person | Three Person | Four Person | Five Person |
| Category | RENT | MAX | MAX | MAX | MAX |
| 1 | \$2,408 | \$118,000 | \$132,720 | \$147,440 | \$159,280 |
| 2 | \$3,238 | \$206,500 | \$232,260 | \$258,020 | \$278,740 |

Rent and Income limits subject to change.

Applicants must make two times the apartment rent in order to qualify.

“Categories” are based on Area Median Income (AMI) as defined by the California tax Credit Allocation Committee, Santa Clara County, 2024.

Category 1 = 60% - 80% AMI

Category 2 = 80% - 140% AMI

